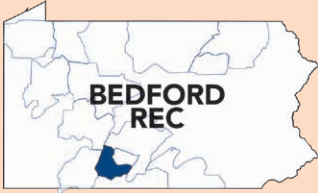


Bedford Rural Electric Cooperative

A Touchstone Energy® Cooperative 



One of 14 electric cooperatives
serving Pennsylvania and New Jersey

BEDFORD REC

P.O. Box 335
Bedford, PA 15522
814-623-5101

Email: support@bedfordrec.com
Website: www.bedfordrec.com

BOARD OF DIRECTORS

President & Allegheny Director

Ronald W. Wilkins
Napier and Harrison Twp.,
New Paris, Manns Choice and
Schellsburg Boroughs

Vice President & PREA Director

Donald E. Hoenstine
Kimmel and King Twp.

Secretary

Paul L. Rummel Jr.
Bedford and Cumberland Valley Twp.

Treasurer

Reuben R. Lafferty
Juniata Twp., Bedford County, and
Allegheny Twp., New Baltimore Borough,
Somerset County

Assistant Secretary

Earl W. Garland
East Providence Twp., Bedford County,
and Brush Creek Twp., Fulton County

Assistant Treasurer

Dale R. Sprigg II
West St. Clair, Pavia, and Lincoln Twp.,
Pleasantville Borough

Brian I. Hoover

Monroe and West Providence Twp.,
Everett Borough

Troy A. Mickle

East St. Clair Twp., Bedford County

Travis L. Wigfield

Colerain, Snake Spring and
South Woodbury Twp.

Attorney

James R. Cascio

OFFICE HOURS

Monday through Friday
7:30 a.m. - 4:00 p.m.

Factors that Impact Electricity Prices



**BROOKS
SHOEMAKER**

EVERYONE CAN'T HELP BUT NOTICE inflation has impacted everything from the price of gasoline to the price of eggs. The cost for the fuels required to produce electricity have also risen.

There are a few key elements that impact electricity prices and rates. Some of these factors we can manage, some of them you can manage and others are beyond both of our control.

There are three parts to your monthly electric bill: the flat, monthly base charge, and the generation and distribution charges, which are both based on kilowatt-hour (kWh) consumption.

The base charge covers costs associated with providing electricity to your home or business. This includes equipment, materials, labor and operating expenses necessary to reliably serve each meter in the cooperative's service territory, regardless of the amount of energy used. Like many other businesses, we've experienced supply chain issues and steep cost increases for some of our basic equipment. Because we are a not-for-profit cooperative, some of these expenses must be shared with our members. I should note the base charge is the same for everyone in a particular rate class, and the costs are shared equally across the membership.

The generation and distribution components of your monthly bill are based on your energy consumption. You've likely noticed the amount of energy you use can vary from month to month and is typically impacted by extreme temperatures. When temperatures soar or dip, your cooling and heating equipment run longer, increasing your energy use. Regardless, you have some control over energy consumption. Your thermostat is a great place to start; try to keep it close to 78 degrees during summer months and 70 in the winter.

I hope this information sheds light on some of the factors that impact electricity prices. While we can't control the weather or the rising costs of fuel, please know Bedford Rural Electric Cooperative is doing everything possible to keep internal costs down.

Our part in a powerful purpose

As children, we're often asked, "What do you want to be when you grow up?" The question generates many different responses, but those we hear most often are jobs where we can make a difference. We start considering ways to make an impact at a young age, and we move into adulthood hoping our careers and lives can leave our communities better than we found them.

Electric cooperatives were built from this same need and desire to initiate change. From the beginning, we sought to improve the lives of those around us, even when others believed it was fruitless. The cooperative business model ensures we are driven by that sense of community purpose, and it focuses on:

- Being local and community-driven because we were built by the communities we serve.
- The idea that every member counts and our peers in our community

Continued on page 12D

Play That Tune: One Member's Love of Music

GARY DIEHL, MEMBER SERVICES MANAGER

GREETED WITH A FRIENDLY HANDSHAKE and a great big smile, you can tell after a few minutes of conversation with Artie Burtnett that he cares deeply about the important things in life, like family, grandkids, the community, and being a successful local business owner. But talk to him for a bit longer and it becomes abundantly clear — the dude loves music! To say he is passionate about playing, practicing, entertaining and dabbling in some songwriting is no understatement.

Artie grew up in Bedford and has been a member of Bedford Rural Electric Cooperative (REC) for more than 30 years. He and his wife, Cheryl, reside in Imlertown. When you turn into their long driveway, you immediately get the feeling they created something special — from the perfectly landscaped exterior to the postcard view from the top of the drive.

One of the first things to stand out is the striped lawn and how much time they must spend mowing. Then you might notice several golf flags blowing in the breeze. Yep, Artie built himself a practice golf course. But the real kicker is when you walk down the steps into Artie's basement. At first glance, it appears to be your typical "man cave" with a cool bar, big TV and Pittsburgh Steelers



GETTING IN THE ZONE: Artie Burtnett, owner of the the Burtnett Agency, lets his fingers do the walking on the bass guitar.



UNPLUGGED: Bedford Rural Electric Cooperative member Artie Burtnett covers a John Mellencamp song while playing acoustic guitar in his music room.

memorabilia. But it's actually Artie's music room. And if you know someone who adores making music, regardless of their instrument of choice, you know they almost all have some form of a music room. Artie's contains a full drum set, multiple electric and acoustic guitars, and a sound system that literally shakes the walls.

Artie got his first drum set at age 12. Night after night, he and some school buddies would get together and jam in the room above his father's automotive shop. There was no HVAC system in that room, so in the summer it could be more than 100 degrees, and sometimes in the winter, he could see his breath. But the band played on, not necessarily thinking they were going to be rock stars, but just because they loved making music.

The digital age hadn't arrived yet, so getting good quality sound was certainly a challenge. At 14, Artie rigged his first sound system using an old record player. I can only imagine what the conversation and music must have sounded like when the teenagers got together. But practice paid off: The teens who frequented that stuffy room are now in their 50s and accomplished musicians in their own right.

At 15, Artie was recruited to be the drummer for a local

band called the Country Rockets. The group played at many venues, including local fairs and carnivals. In the music business, it almost goes without saying you meet a lot of fascinating people. Artie recalls one such encounter during a talent showcase with the Country Rockets. The band was in New Stanton, basically auditioning for booking agents who schedule shows for county fairs. As it turned out, a young fellow from down south was there showcasing his talents without the accompaniment of a band or partner. One of the event promoters asked the Country Rockets if they would back this young fellow for a few songs. They agreed and played several songs with none other than Alan Jackson, who at the time had not reached his megastar status.

"I don't know if he would remember us by name, but he'd remember me because I spilled coffee all over the guy," Artie recalls. "He wasn't too happy about that."

On another occasion, the Country Rockets opened a show for Ronny Robbins, son of the late Marty Robbins, at the Great Bedford County Fair. They were also fortunate enough to play a set with Conway Twitty's son, Michael. Artie has also performed at the famous Bluebird Café in Nashville, Tenn., the same stage which has been graced by the likes of Garth Brooks, Keith Urban, Carole King, Faith Hill, Vince Gill, Taylor Swift, Kathy Mattea and many, many more. In addition to the Bluebird, he also played at the Opryland stage in Nashville.

Through the years, Artie has played with Ground Zero, Express, Suspicion, Mandrake and Mad Hatter, among others. These days, you can find him performing on

any given weekend as a solo act or with his longtime musical friend, Jim Fungaroli. Jim spent many years in Nashville playing with Kevin Dale and the Bad Habit Band or touring around various venues with Letters from Tomorrow. Along with Artie, members of the latter include Heidi, Donald and Ronald Showalter. And if you ask Alexa to play some original tunes by Jackson Monsour, also a Bedford REC member, you'll hear Artie playing drums on some of those tracks.

When he's not jamming, Artie runs a successful insurance business. The Burtnett Agency, founded in 2008 and located on Penn Street in Bedford, sits near the Bedford REC office. You may wonder: How does someone who runs a business, raises kids, dotes on grandkids, stays active in the community and plays the occasional round of golf find time to practice music? With a catalog of about 150 songs in his head — because he doesn't use cheat sheets or his phone — he must practice.

"Bottom line is you make the time when you are passionate about something," Artie says. "Sometimes, you play to an empty room, and sometimes, you play for a big crowd. But looking out over the audience and knowing you made someone smile is so satisfying. And looking out over them and knowing you may have made someone cry from your music is even more awesome."

Check out Artie's Facebook page to see when and where his upcoming gigs will be. September events include Kevin Dale and the Bad Habit Band at Jim & Jimmy's in Johnstown, Sept. 10, and Letters from Tomorrow at the Saxton VFW, Sept. 23. 🎸



BANG ON THE DRUM: Bedford Rural Electric Cooperative member Artie Burtnett demonstrates his skills on the drums.



**FROM THE GENERAL
MANAGER & CEO**

Continued from page 12A

should represent our interests.

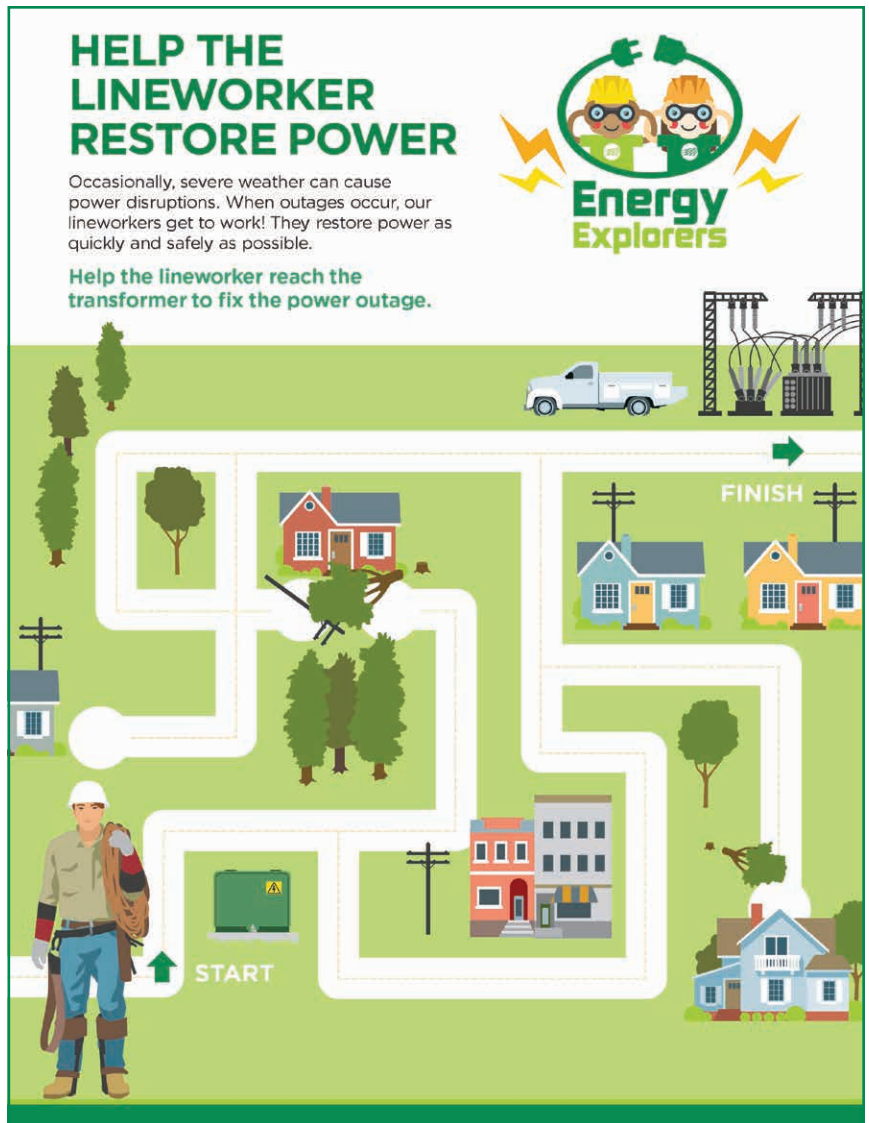
- The importance of serving people over profits and returning excess revenue back to our members.
- The concept that member satisfaction is the greatest measure of success.
- Innovation and quality of life by creating programs and services that support economic development in our community.

We achieve our mission by ensuring the reliable delivery of electricity, while diligently trying to make a difference in our community. It's a powerful combination!

September energy efficiency tip of the month

Did you know fall is the perfect time to schedule a tune-up for your heating system? Home heating accounts for a large portion of winter energy bills. No matter what kind of system you have, you can save energy and money by regularly maintaining your equipment. Combining proper maintenance and upgrades with recommended insulation, air sealing, and thermostat settings can save about 30% on your energy bills. 🏠

BROOKS SHOEMAKER
GENERAL MANAGER & CEO



OUTAGE REPORTING

In case of an outage...

- 1 Check your fuses or circuit breakers.
- 2 Check with your neighbors, if convenient, to see if they have been affected by the power failure.
- 3 Call the 24-hour number, 814-623-7568, OR call 800-808-2732* during office hours.

*(Please help us save money – only use this number if toll charges apply.)

Please give the person receiving the call your name as it appears on your bill, your telephone number and your map number, if known. Any specific information about the outage will also be helpful in pinpointing the problem.

**To report an outage call:
814-623-7568**

During widespread power outages, many members are calling to report power failures. You may receive a busy signal, or in certain cases, your call may go unanswered. This occurs in after-hours outages when the office is not fully staffed. Please be patient and try again in a few minutes.