

Bedford Rural Electric Cooperative

A Touchstone Energy® Cooperative 



One of 14 electric cooperatives serving Pennsylvania and New Jersey

BEDFORD REC

P.O. Box 335
Bedford, PA 15522
814-623-5101

Email: support@bedfordrec.com
Website: www.bedfordrec.com

BOARD OF DIRECTORS

President & Allegheny Director

Ronald W. Wilkins
Napier and Harrison Twps.,
New Paris, Manns Choice and
Schellsburg Boroughs

Vice President & PREA Director

Donald E. Hoenstine
Kimmel and King Twps.

Secretary

Paul L. Rummel Jr.
Bedford and Cumberland Valley Twps.

Treasurer

Reuben R. Lafferty
Juniata Twp., Bedford County, and
Allegheny Twp., New Baltimore Borough,
Somerset County

Assistant Secretary

Earl W. Garland
East Providence Twp., Bedford County,
and Brush Creek Twp., Fulton County

Assistant Treasurer

Dale R. Sprigg II
West St. Clair, Pavia, and Lincoln Twps.,
Pleasantville Borough

Brian I. Hoover

Monroe and West Providence Twps.,
Everett Borough

Troy A. Mickle

East St. Clair Twp., Bedford County

Travis L. Wigfield

Colerain, Snake Spring and
South Woodbury Twps.

Attorney

James R. Cascio

OFFICE HOURS

Monday through Friday
7:30 a.m. - 4:00 p.m.

Is a Ductless Mini-Split System Right for Your Home?



BROOKS SHOEMAKER

HOW WOULD YOU LIKE A personalized comfort zone within your home? One where the temperature is customized to your liking and may be different than the temperature in your shared living areas or other rooms in the house? This flexibility and customization are precisely why mini-split systems, also known as ductless air-source heat pumps, and their energy-efficiency aspects are so popular.

Let's unpack some mini-split basics and explore whether this type of system is a good choice for your home heating and cooling needs.

These heating, ventilation, and air conditioning systems allow you to control the temperature in individual rooms or spaces. Like central heating and cooling, mini-split systems have two main components: an outdoor compressor and indoor air-handling unit(s). A narrow conduit with refrigerant lines, drain tubing, electric wires and control lines links the indoor unit(s) to the outdoor compressor.

While central heating and cooling systems feature one or more indoor units connected by ductwork, mini-split systems are typically ductless. This means energy is not lost traveling through long stretches of ductwork. Installing the air-handling unit in a desired room or area enables you to control the temperature more precisely, reducing energy consumption. That's because you're adjusting the temperature to a single room or space, rather than the whole home.

Mini-split systems are a popular option in home additions or to supplement heating and cooling in a space that may be farther away from the main living area, such as a finished attic or basement. In these instances, it may not be feasible to install or extend the ductwork required in traditional central cooling and heating systems. In contrast, mini-splits are relatively easy to install, requiring a small hole for the conduit connecting the indoor and outdoor units. Most systems can handle up to four indoor rooms, or zones, connected to one outdoor unit. Each of the zones can be customized because each includes a thermostat that enables you to heat or cool the space as needed, saving energy and money over time.

Mini-split systems bring additional benefits. They are quiet and improve indoor air quality, too. Many come with remotes to make temperature control even easier, and because of their smaller size, these systems have many placement options for indoor and outdoor units.

One of the greatest benefits of mini-split systems is that they typically have a higher seasonal energy efficiency ratio (SEER) rating than traditional central heating and cooling systems. The higher the unit's SEER rating, the more energy efficient it is.

According to the U.S. Department of Energy, however, mini-split systems "cost about \$1,500 to \$2,000 per ton of cooling capacity. That's about 30% more than central systems (not including ductwork) and may cost twice as much as window units of similar capacity."

The technology is improving and evolving; however, those living in colder climates may need a fuel backup to run a mini-split system. Aesthetics are another factor to consider: Some homeowners don't like the appearance of the

Continued on page 16D

Animal House Dog Grooming Open for Business

JENNA REFFNER, OFFICE ASSISTANT

WHEN JUSTINE LEISTER WAS A little girl, she had cocker spaniels as pets. Her family didn't have the extra money to pay for a groomer, so Justine taught herself. She had no idea this would groom her for a career and eventually a bustling business with four employees.

Justine, a Bedford County native, attended Chestnut Ridge Senior High School, where she met her husband, Jeremy. She was 14, and he was 16. They married 10 years later and now have two daughters, Jillian and Elli. Jillian

earned both her undergraduate and master's degrees in molecular biology in four years. Elli is studying at Susquehanna University and plans to go into cybersecurity. Both girls are at the top of their classes.

"My husband tells me I raised two overachievers," Justine adds with a laugh.

When her children were young, she decided to go to grooming school, located on the other side of Somerset. She was grateful to her school for working with her schedule.

"I had to be home by 4 p.m. to get my girls off the bus," Justine says, adding when the girls had off from school, she would bring them with her. "They got to play with the dogs all day."

In grooming school, she told the instructor she had groomed her dogs growing up. "She told me cocker spaniels are one of the hardest dogs to groom," she recalls. "I was halfway there."

When Justine graduated, she and her husband were building their home in New Buena Vista. They included an addition to the back of the house that would become her grooming studio for the next 15 years.

"There's a high demand for grooming in Bedford," Justine says. "I built a business of 230 clients out of my home."

However, the location at her house had its drawbacks; it was difficult to bring in clients from the other side of the county. Justine thought about expanding and opening a larger store for years but was hesitant to make such a drastic change.

"I'm 50 — I wasn't sure I wanted to take on more responsibility," she explains.

But she couldn't shake the thought, so she sat her husband down and told him she had to get something off her mind. "It kept eating away at me," she says. "I felt like God was weighing on my heart."

Jeremy surprised her with his response.

"He told me he'd been having dreams every night for three months that I had a bigger store with staff working for me," she recalls. "He said it was in the store by Walmart where the laundromat used to be. God was telling us where we were supposed to be."

The couple started looking at locations. Justine had her heart set on another space, but it was rented to someone else, so they went to look at the former laundromat space in Everett. There were holes in the floor, walls and ceiling; it would take a lot of work.

ANIMAL HOUSE



GROOMER GURU: Justine Leister is the owner of Animal House Dog Grooming with Toys and Treats, which has a new location at the Walmart Plaza in Everett.

They looked at another space next to Walmart that used to house a candle store. Justine could picture her business in there. They contacted the realtor, who told them to start with a letter of intent. After months of going back and forth, the owner changed his mind. Justine was crushed.

“I was in the bedroom crying when Jeremy found me,” she recalls, explaining her husband then called the realtor. “To this day, I still don’t know what he said to him.”

The owner offered the couple the former laundromat space. When they went back to see the location, Justine couldn’t get over all the work that needed to be done.

It took two months to get the inside fixed up, and they’re still working on it. There are small projects here and there, but Animal House Dog Grooming with Toys and Treats is open for business. Justine wants to add a roofed area with rocking chairs to give owners a place to wait while their dogs are being groomed. They also want to add a coffee bar for clients and offer dog training classes.

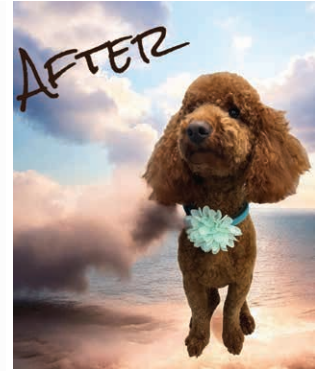
In the front of the store, they offer treats for (human) clients from Just Jaks in Altoona, which are made on location at their bakery. They also offer Pennsylvania-made rawhides for their pets.

Justine wanted to hire trained dog groomers who were unable to open their own shops. She received another surprise when she was approached by two women who wanted to learn grooming and work for her.

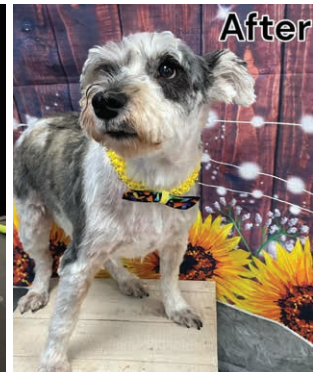
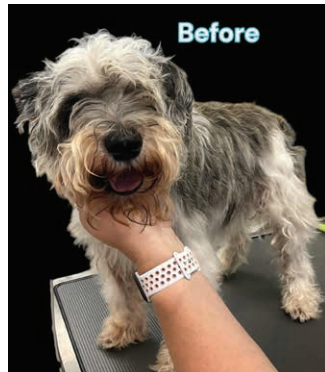
“They had good jobs with benefits,” Justine says. “They said this is something they really wanted to do.”

She started training them to groom this past spring. As of her grand opening on Sept. 14, Justine has four employees and 20 new clients.

Animal House Dog Grooming with Toys and Treats is in the Walmart Plaza, 50 Bedford Square, Everett. Hours are 10 a.m. to 6 p.m. Wednesday through Friday and 10 a.m. to 4 p.m. Tuesday and Saturday. The business is closed Sunday and Monday. For more information, visit their Facebook page or call 814-803-1068. 📞



ANIMAL HOUSE



BEFORE AND AFTER: Here are a few of Justine’s clients that have experienced beautiful transformations.



ANIMAL HOUSE

HAPPY CUSTOMER: Meet one of the many dogs that have been groomed by the caring staff of Animal House Dog Grooming with Toys and Treats.

OFFICE CLOSINGS

The Bedford REC office will be closed Nov. 11 in observance of Veterans Day and Nov. 28 & 29 for Thanksgiving.

**FROM THE
GENERAL MANAGER & CEO**

Continued from page 16A

indoor units, which are more visible than central air conditioning vents.

If you're considering an upgrade or additional heating and cooling equipment, talk to a qualified technician to learn if a ductless mini-split system could work for your home.

**Energy Efficiency
Tip of the Month**

If you're heading out of town during the holiday season, remember to set your home to vacation mode. You can save energy by lowering your thermostat a few degrees or creating an "away" schedule with a smart or programmable thermostat. Newer water heaters include a vacation mode setting to help you save on

water heating costs, or you can simply lower the temperature manually.

Small actions can also stack up to energy savings. Unplug devices that consume energy when they're not

in use, including phone chargers, toothbrush chargers, TVs and gaming consoles. 📶

BROOKS SHOEMAKER,
GENERAL MANAGER & CEO

OUTAGE REPORTING

In case of an outage...

- 1** Check your fuses or circuit breakers.
- 2** Check with your neighbors, if convenient, to see if they have been affected by the power failure.
- 3** Call the 24-hour number, 814-623-7568, OR call 800-808-2732* during office hours.

**(Please help us save money – only use this number if toll charges apply.)*

Please give the person receiving the call your name as it appears on your bill, your telephone number and your map number, if known. Any specific information about the outage will also be helpful in pinpointing the problem.

**To report an outage call:
814-623-7568**

During widespread power outages, many members are calling to report power failures. You may receive a busy signal, or in certain cases, your call may go unanswered. This occurs in after-hours outages when the office is not fully staffed. Please be patient and try again in a few minutes.



HUNTING SAFETY

- Before you begin a hunt, note the location of power lines and other electrical equipment. Dense trees can make them hard to see.
- Obey all signs that advise electrical hazards, especially when placing a tree stand.
- Never use power poles to support a tree stand.
- Never shoot at power lines or electrical equipment.
- When setting up and taking down the stand, make sure you don't make contact with any overhead electrical equipment.
- If you're using a portable generator on your trip, don't run it in a confined area.

For more information visit:

