
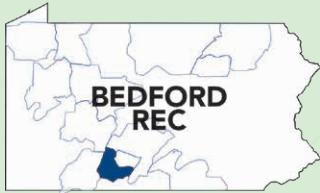


Bedford Rural Electric Cooperative

A Touchstone Energy® Cooperative 



One of 14 electric cooperatives
serving Pennsylvania and New Jersey

BEDFORD REC

P.O. Box 335
Bedford, PA 15522
814-623-5101

Email: support@bedfordrec.com
Website: www.bedfordrec.com

BOARD OF DIRECTORS

President & Allegheny Director

Ronald W. Wilkins

Napier and Harrison Twps.,
New Paris, Manns Choice and
Schellsburg Boroughs

Vice President & PREA Director

Donald E. Hoenstine

Kimmel and King Twps.

Secretary

Paul L. Rummel Jr.

Bedford and Cumberland Valley Twps.

Treasurer

Reuben R. Lafferty

Juniata Twp., Bedford County, and
Allegheny Twp., New Baltimore Borough,
Somerset County

Assistant Secretary

Earl W. Garland

East Providence Twp., Bedford County,
and Brush Creek Twp., Fulton County

Assistant Treasurer

Dale R. Sprigg II

West St. Clair, Pavia, and Lincoln Twps.,
Pleasantville Borough

Brian I. Hoover

Monroe and West Providence Twps.,
Everett Borough

Troy A. Mickle

East St. Clair Twp., Bedford County

Travis L. Wigfield

Colerain, Snake Spring and
South Woodbury Twps.

Attorney

James R. Cascio

OFFICE HOURS

Monday through Friday
7:30 a.m. - 4:00 p.m.

The Cooperative's 84th Annual Meeting



THE COOPERATIVE'S 84TH ANNUAL MEETING will be held Wednesday, April 12, at the Bedford County Fairgrounds (108 Telegraph Road, Bedford), which is just west of downtown Bedford on Business Route 30, also known as West Pitt Street. The fairgrounds are adjacent to the Bedford exit of Interstate 99. Once again, by popular request, we are hosting a "drive-thru" meeting. As such, finding a parking spot will not be a concern for members.

The meeting begins at 10 a.m. and ends at 1:30 p.m. (please do not arrive before 10 so we can avoid traffic backing up onto Route 30). Members, who will remain in their cars for the event, will enter at the main fairground's entrance and follow the marked route. At stops along the way, members will register, pick up an annual report and receive a ballot to vote in the election of directors — if you haven't already voted by mail. Members will also enjoy free refreshments, pick up an attendance gift and, finally, turn in their completed ballot, if voting at the meeting. Registered attendees will also be eligible to win door prizes. Lucky winners will be announced after the meeting.

Around March 15, you will receive a packet in the mail. It will contain the "Official Notice of the Annual Meeting," your registration card for the meeting and a mail-in ballot. Once the packet is received, it is up to you to decide if you want to vote with the mail-in ballot or bring your registration card to the meeting and vote in person. Naturally, you can't vote both ways. If you choose to vote by mail, your ballot must be received by our election vendor BEFORE April 10, so please allow sufficient time for postal delivery. Also, if you choose to vote by mail, we still encourage you to attend the meeting.

Please remember the change to mail-in voting also means we no longer accept nominations for director from the floor at the annual meeting. The board also felt this was appropriate because directors need to meet certain eligibility standards to qualify for the position. It had become increasingly time-consuming to properly confirm a candidate's eligibility while the meeting was in session and members were waiting to cast their vote.

Cumulative voting is also no longer being used. Each member is entitled to one vote in each of the three districts that are electing directors. As a result, we no longer vote using numbers ("1," "2" or "3"). Instead, you will cast your vote in each of the three districts by darkening the square (■) next to the candidate you have chosen. Numbers, check marks and other symbols will not be accepted.

Each year, the annual meeting is the defining moment for all cooperatives across the United States. Why? Because it presents an opportunity for voting members to democratically control the future of their cooperative. Each member — young or old, large or small consumer of electricity — has an equal voice by voting for their member-representatives: the board of directors. What better way to map the future of the organization than by helping to decide who sits on the nine-member board of directors?

Directors are elected for three-year terms, with three of the nine seats up for election each year. Despite the Nominating Committee's efforts, a *Penn Lines*

Continued on page 16D

2023 DIRECTOR NOMINEES

The following are profiles of cooperative members nominated for the three seats up for election this year on the Bedford REC Board of Directors. Elections will be held at the Bedford REC Annual Meeting, April 12, 2023, at the Bedford County Fairgrounds, Bedford, Pa.

DISTRICT 1: Reuben Lafferty



Reuben currently represents District 1 and serves as treasurer on the Bedford Rural Electric Cooperative (REC) Board of Directors. He has been a member of the co-op for 53 years. Reuben is a graduate of Hyndman High School and served in both the U.S. Marine Corps and U.S. Army Reserve for a combined total of 23 years. He retired from the Bedford Farm Bureau, where he was a deliveryman/truck

driver for more than 30 years.

Reuben lives in Manns Choice and has two children, David and Shannen. He is a member of the Bedford Masonic Blue Lodge 320, the Harrisburg Consistory, the Bedford County Detachment Marine Corps League and the Fleet Reserve Association. He enjoys hunting, fishing and metal detecting.

Candidate's Comments: "As director of District 1, I will continue to work to ensure reliable service to the members of the cooperative, and I really enjoy meeting the members."

DISTRICT 5: Troy Mickle



Troy along with his wife, Susan, and their two children, Zackery and Kaleb, live in Bedford County's East St. Clair Township. He has been a member of the co-op for 29 years. An East St. Clair Township supervisor for the past 11 years, Troy is a 1990 graduate of Warwick High School.

Troy was nominated by the committee to run for District 5 director for the first time.

Troy is very active in the community. He is president of the Bedford County Township Officials Association, a board member on the East St. Clair Municipal Authority and secre-

tary of the Bedford County Sanitary Corp. Troy also is a 4-H leader in Lovely Valley, a Bedford County Junior Fair Board adviser and an assistant coach for the Chestnut Ridge rifle team. He attends Connect Church, and in his spare time likes woodworking, camping, and hunting.

Candidate's Comments: "I'm interested in a position to help continue the service Bedford REC provides, and as we enter into alternative energy sources, I want to help see the benefit of those energy sources. If elected to the board, my hope is to continue to provide value to the cooperative's members and hopefully continue with reasonable changes that benefit not only Bedford REC as a company, but also the members."

DISTRICT 6: Paul L. Rummel Jr.



Paul currently represents District 6 and serves as secretary of the Bedford REC Board of Directors. Paul is manager of Shawnee Vinyl, where he has worked for the past 20 years. A 1982 graduate of Everett Christian Academy, he served four years in the U.S. Air Force.

Paul and his wife, Susan, live in Bedford and have been members of the cooperative for the past 18 years. They have five children: Selena Rummel, Michaela (Rummel) McAlpine, Nicholas Rummel, Chasidy

Shovlin and Justin Miller. Paul is a member of the ACTS Community Church, where he serves as a deacon.

In his spare time, he enjoys hunting, fishing, woodworking, metal detecting and camping.

Candidate's Comments: "It's been a pleasure to serve the members of Bedford REC for the past 10 years. During that time, I've received training and experience in the power industry to help with serving our co-op members. I hope to continue using my experience in business to help with oversight in our growing power needs for our co-op."

DISTRICT 6: Jessica Zimmers-Hamilton



Jessica and her husband, Drew, live in Bedford and have been members of the cooperative for two years. Her family hails from Bedford, where her parents, Robert and Barbara, have been cooperative members since the 1970s. She has more than 12 years experience in corporate treasury with extensive business operations knowledge in liquidity and systems management.

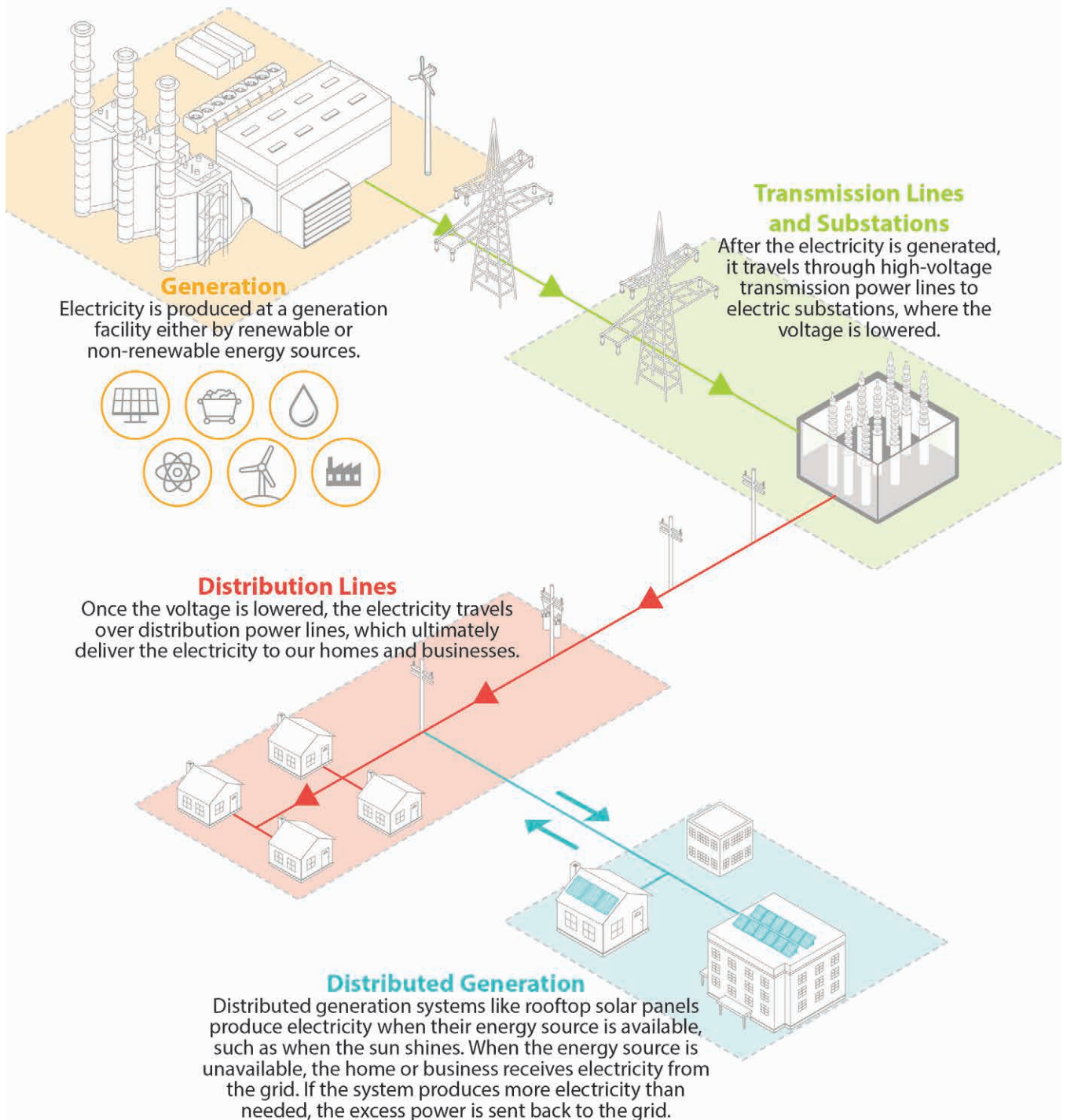
Jessica was nominated by the committee to run for

director in District 6 for the first time.

A 2001 graduate of Bedford High School, Jessica earned a bachelor's degree from Penn State University in 2005. In 2012, she obtained a master's degree in business administration from Baldwin Wallace College. One of Jessica's hobbies is genealogy.

Candidate's Comments: "I am interested in joining the board to share my knowledge and background in business operations to help the cooperative excel."

HOW ELECTRICITY REACHES YOU



FROM THE GENERAL MANAGER

Continued from page 16A

article and a billing insert, all aimed at attracting interested candidates, only four members were interested in being on the ballot. Profiles of the candidates vying for the three director seats appear on page 16B. Each of them was selected by the Nominating Committee. This year, we did not receive any petitions from members requesting they be added to the ballot. Also, as I stated earlier, additional nominations will no longer be accepted during the meeting.

Mark your calendars now and plan to join us on April 12. If you cannot join us, please remember to cast your vote by mail. To simplify registration at the meeting, please tear off the registration card and bring it with you to the meeting. Remember, every vote counts!

Energy Efficiency Tip of the Month

This planting season include energy efficiency in your landscaping plans. Adding shade trees around your home can reduce surrounding air temperatures as much as 6 degrees. To block heat from the sun, plant deciduous trees around the south side of your home. Deciduous trees provide excellent shade during the summer and lose their leaves in the fall and winter months, allowing sunlight to warm your home. 🌳

BROOKS SHOEMAKER
GENERAL MANAGER



ELECTRONICS EFFICIENCY WORD SEARCH

Did you know there are ways you can reduce your electronics energy use?

Read the energy-saving tips below, then find and circle the bolded words in the puzzle.



B J C M G S N A M O R S W U L
R A F O D V T L L P D I O S W
E B T E M V C E U X S Y W D G
C B P T D P O W E R S T R I P
H Y G M E T U A U Y H Z P U Z
A R P Q E R U T L R N Z N U Y
R F I H L V I C E Q V P C E S
G T D F F W K E M R L B N H O
E B H W C F Q W S U K Y N Z M
A Q I L I F K N G L O I K B A
B S R E G R A H C E N O H P C
L N O Y O V I M A I V I R X T
E V S U A I L K O L U Y N F C
Y H V K S L F G T R I P B T G
P O W E R M A N A G E M E N T



- Use a **power strip** with an on/off switch when powering multiple electronics to easily manage energy use.
- For devices that require **batteries**, use **rechargeable** ones, which are more cost-effective and environmentally friendly.
- **Unplug** electronic products that consume energy even when they're not in use, like **phone chargers**.
- Use the sleep or **power management** mode on your **computer** to save on energy costs.

OUTAGE REPORTING

In case of an outage...

- 1** Check your fuses or circuit breakers.
- 2** Check with your neighbors, if convenient, to see if they have been affected by the power failure.
- 3** Call the 24-hour number, 814-623-7568, OR call 800-808-2732* during office hours.

*(Please help us save money – only use this number if toll charges apply.)

Please give the person receiving the call your name as it appears on your bill, your telephone number and your map number, if known. Any specific information about the outage will also be helpful in pinpointing the problem.

**To report an outage call:
814-623-7568**

During widespread power outages, many members are calling to report power failures. You may receive a busy signal, or in certain cases, your call may go unanswered. This occurs in after-hours outages when the office is not fully staffed. Please be patient and try again in a few minutes.